

 3  2  1



Bridge Road, *Sunninghill*

OSBORNE HEATH

A two/three bedroom character cottage with a loft room and parking, in a cul-de-sac close to Sunninghill High Street.

On the ground floor there is a living room with open fire, kitchen with dining space and doors out to the garden, and a bathroom.

The first floor has the principal bedroom with built-in wardrobes, WC and a second double bedroom.

The loft has been converted and could be used as a study or occasional bedroom.

Bridge Road is a small cu;-de-sac in the centre of Sunninghill Village. Nearby schools include Charters, Holy Trinity, St Francis, St Michael's and The Marist. The village has a number of local high street businesses and great restaurants and pubs. Nearby places of interest include Ascot Racecourse, Coworth Park, Guards Polo Club, Legoland, The Lexicon, Wentworth Club and Windsor Great Park. Sunninghill is also convenient for the M3, M4, M25 and Heathrow Airport.

EPC rating D. Council Tax TBC.

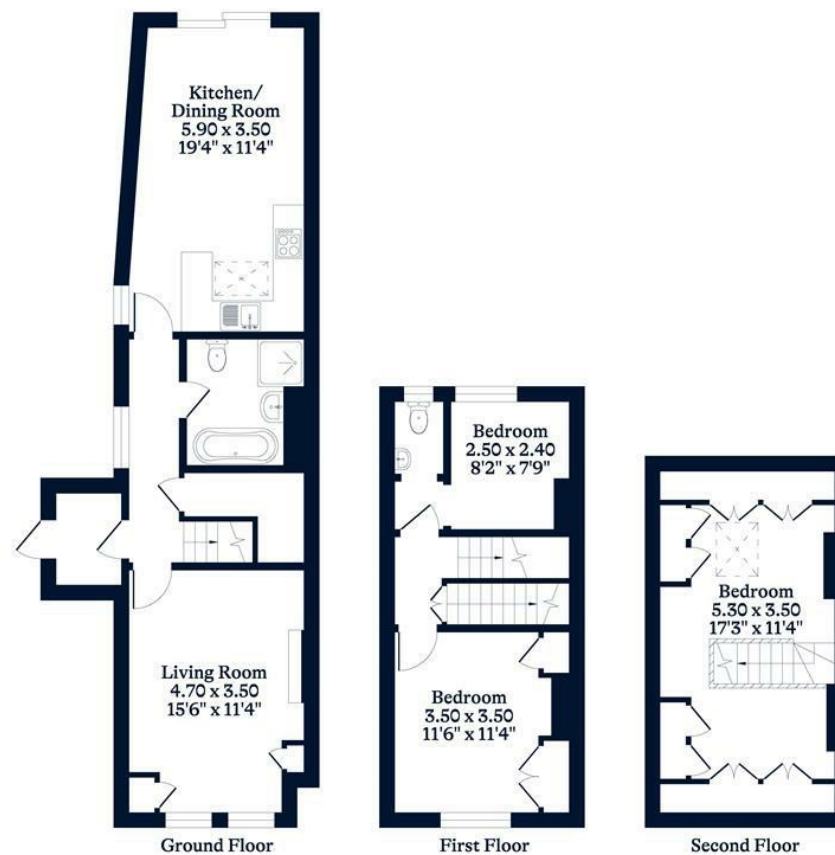




APPROXIMATE FLOOR AREA
House - 101.10 sq m - 1089 sq ft
(Gross Internal Area)



NOT TO SCALE
This plan is for illustration purposes only



This plan is for layout guidance only. Not drawn to scale unless stated. Windows and door openings are approximate. Whilst every care is taken in the preparation of this plan, please check all dimensions, shapes and compass bearings before making any decisions reliant upon them.

OSBORNEHEATH.CO.UK